

CAPE HAYAT

A CURATED COLLECTION BY RAK PROPERTIES

APARTMENTS FLOOR & KEY PLANS

رأس الخيمة العقارية
RAK PROPERTIES



APARTMENT FLOOR PLANS

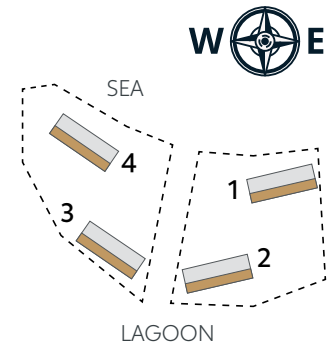
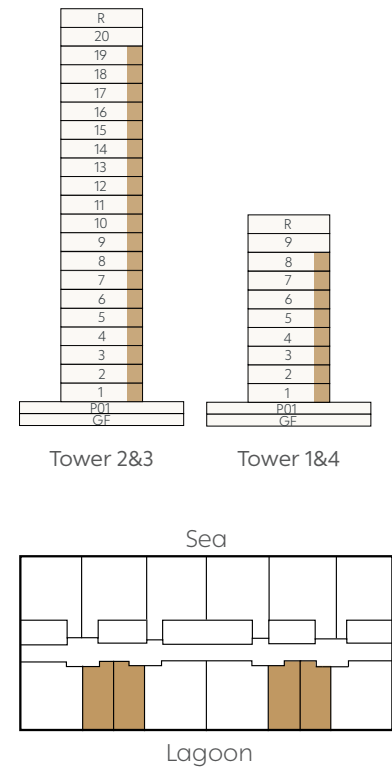
CAPE HAYAT

TYPICAL TOWER

STUDIO

TYPE 1 (MIDDLE)	SQ.M	SQ.F
APARTMENT AREA	35.99	387.39
BALCONY AREA	7.30	78.58
TOTAL AREA	43.29	465.97

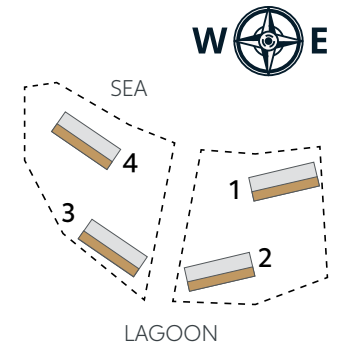
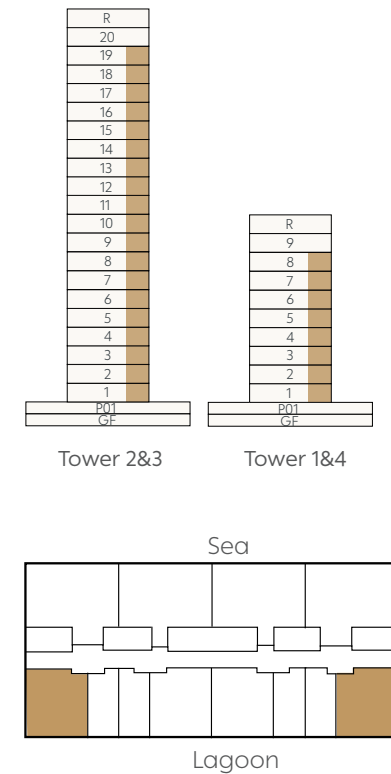
FLOOR	UNIT NO.
TOWER 2 & TOWER 3: L01	02, 03, 06, 07
TOWER 2 & TOWER 3: L02-L03	05, 06, 09, 10
TOWER 2 & TOWER 3: L04-L19	04, 05, 08, 09
TOWER 1 & TOWER 4: L01-L03	05, 06, 09, 10
TOWER 1 & TOWER 4: L04-L08	04, 05, 08, 09



1 BEDROOM APARTMENT

TYPE 1 (CORNER)	SQ.M	SQ.F
APARTMENT AREA	76.23	820.53
BALCONY AREA	14.81	159.41
TOTAL AREA	91.04	979.94

FLOOR	UNIT NO.
TOWER 2 & TOWER 3: L01	01, 08
TOWER 2 & TOWER 3: L02-L03	04, 11
TOWER 2 & TOWER 3: L04-L19	03, 10
TOWER 1 & TOWER 4: L01-L03	04, 11
TOWER 1 & TOWER 4: L04-L08	03, 10



Floor plan numbers, square footage, and floor plans are approximate. Final dimensions, square footage and floor plans may vary or may be mirrored. Balcony area varies depending on location of unit on the floor.

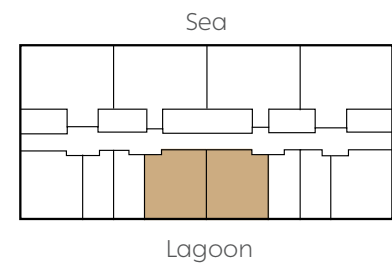
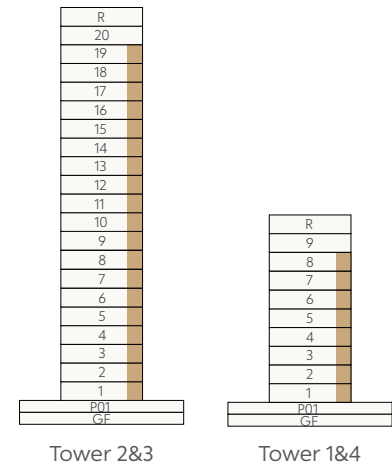
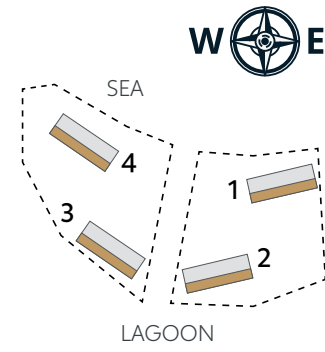
CAPE HAYAT

TYPICAL TOWER

1 BEDROOM APARTMENT

TYPE 2 (CENTRAL)	SQ.M	SQ.F
APARTMENT AREA	74.96	806.86
BALCONY AREA	14.59	157.05
TOTAL AREA	89.55	963.91

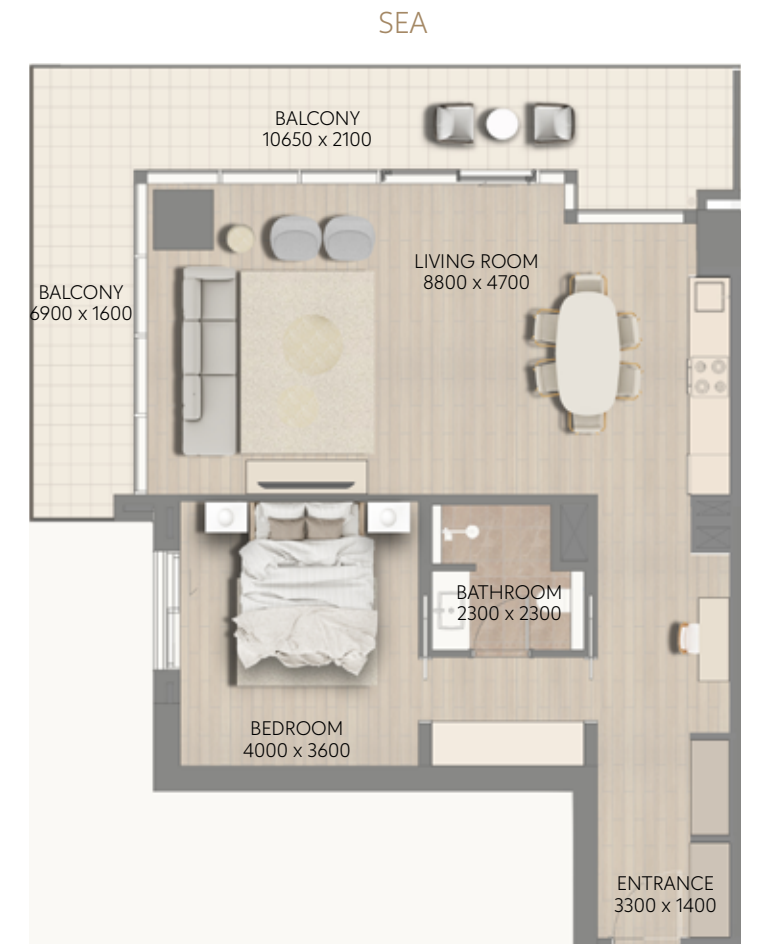
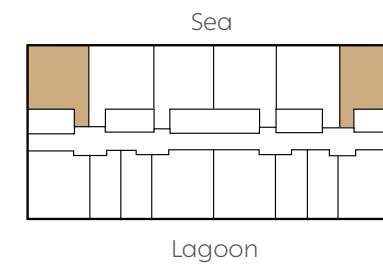
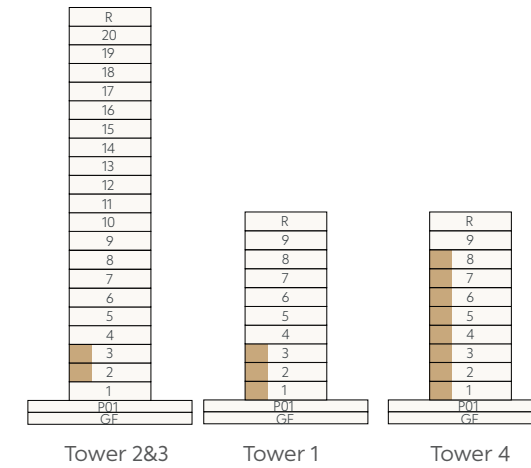
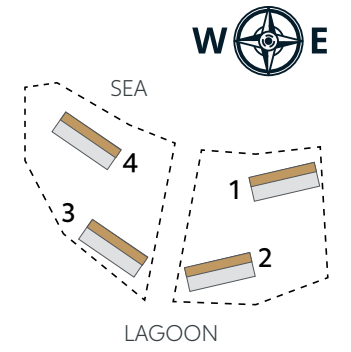
FLOOR	UNIT NO.
TOWER 2 & TOWER 3: L01	04, 05
TOWER 2 & TOWER 3: L02-L03	07, 08
TOWER 2 & TOWER 3: L04-L19	06, 07
TOWER 1 & TOWER 4: L01-L03	07, 08
TOWER 1 & TOWER 4: L04-L08	06, 07



1 BEDROOM APARTMENT

TYPE 3 (CORNER)	SQ.M	SQ.F
APARTMENT AREA	82.09	883.61
BALCONY AREA	27.12	291.92
TOTAL AREA	109.21	1175.53

FLOOR	UNIT NO.
TOWER 2 & TOWER 3: L02-L03	03, 012
TOWER 1: L01-L03	03, 012
TOWER 4: L01-L08	03, 012



Floor plan numbers, square footage, and floor plans are approximate. Final dimensions, square footage and floor plans may vary or may be mirrored. Balcony area varies depending on location of unit on the floor.

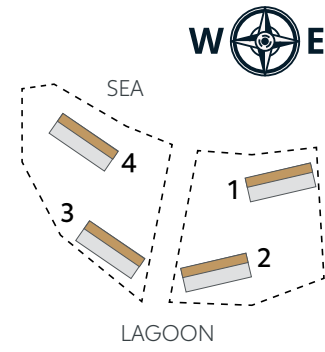
CAPE HAYAT

TYPICAL TOWER

1 BEDROOM APARTMENT

TYPE 4 (MIDDLE)	SQ.M	SQ.F
APARTMENT AREA	74.21	798.79
BALCONY AREA	19.00	204.51
TOTAL AREA	93.21	1003.30

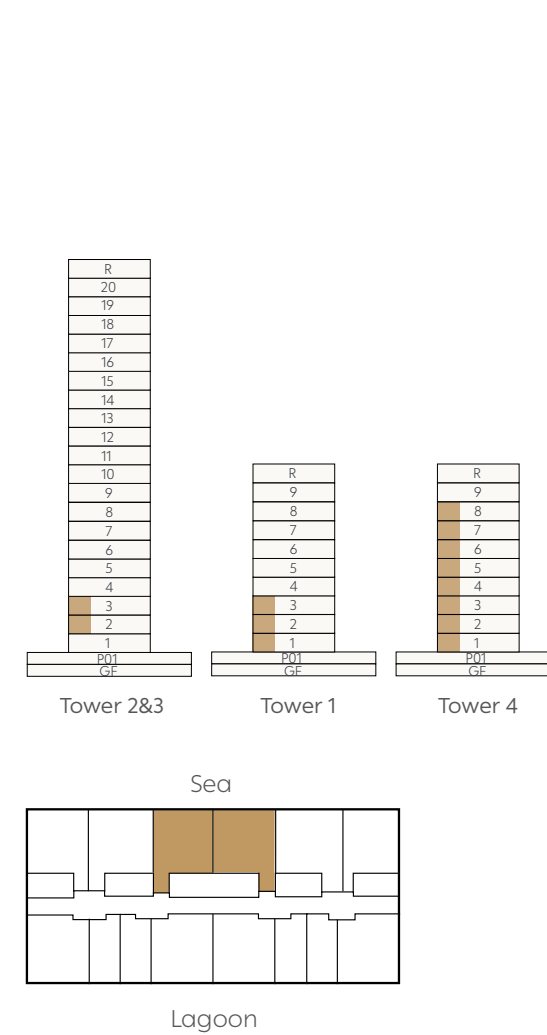
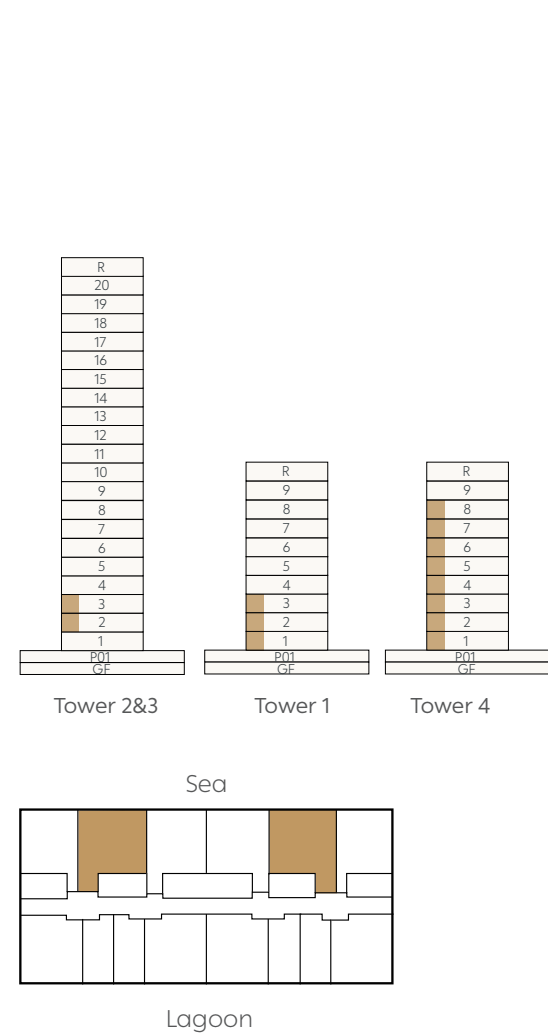
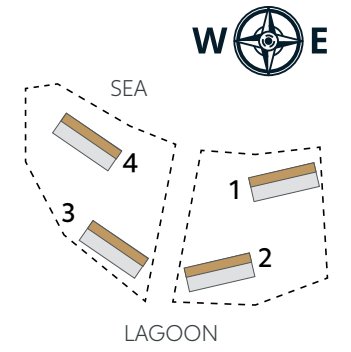
FLOOR	UNIT NO.
TOWER 2 & TOWER 3: L02-L03	02, 013
TOWER 1: L01-L03	02, 013
TOWER 4: L01-L08	02, 013



1 BEDROOM APARTMENT

TYPE 5 (MIDDLE)	SQ.M	SQ.F
APARTMENT AREA	71.47	769.30
BALCONY AREA	19.11	205.70
TOTAL AREA	90.58	975.00

FLOOR	UNIT NO.
TOWER 2 & TOWER 3: L02-L03	01, 014
TOWER 1: L01-L03	01, 014
TOWER 4: L01-L08	01, 014



Floor plan numbers, square footage, and floor plans are approximate. Final dimensions, square footage and floor plans may vary or may be mirrored. Balcony area varies depending on location of unit on the floor.

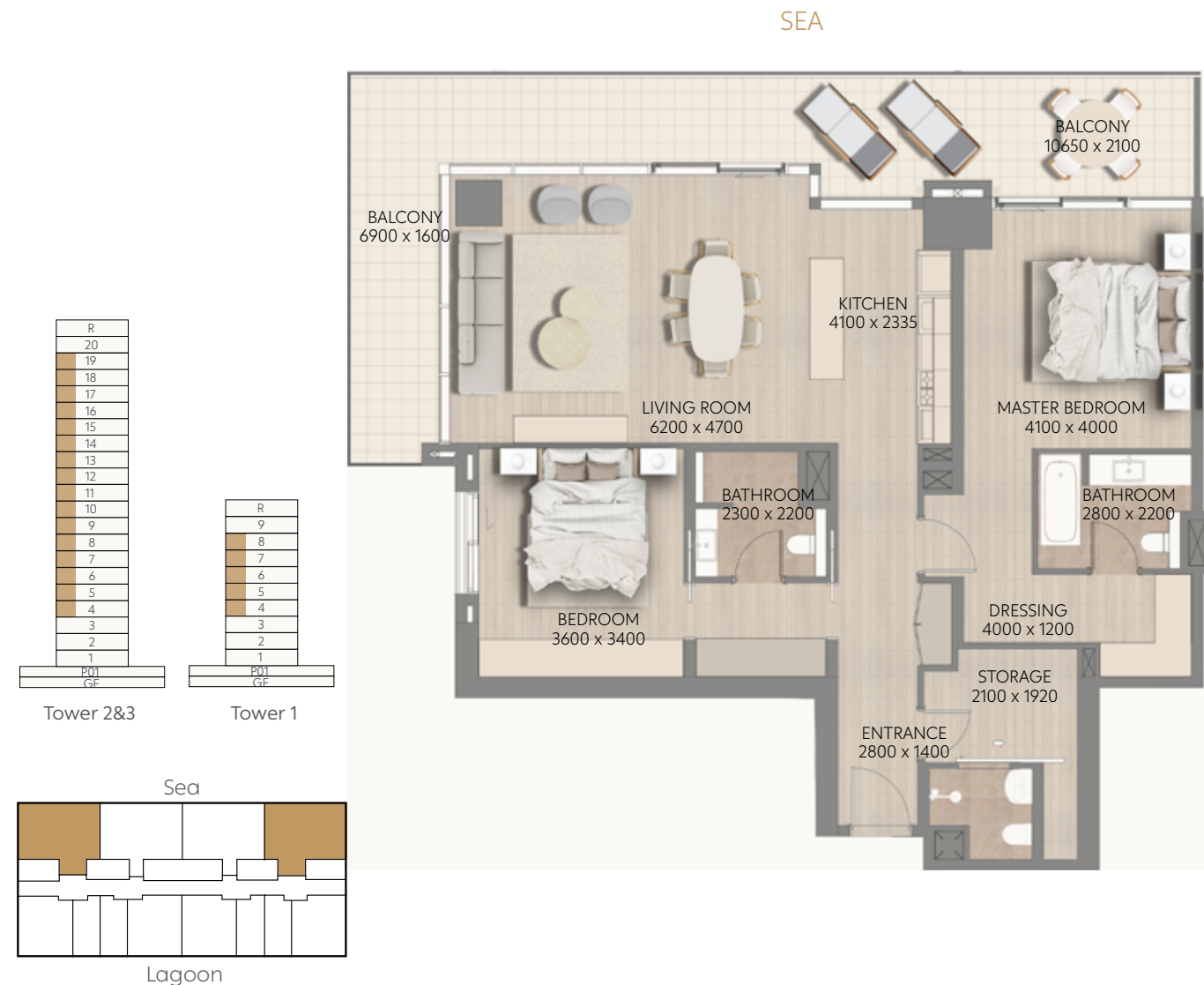
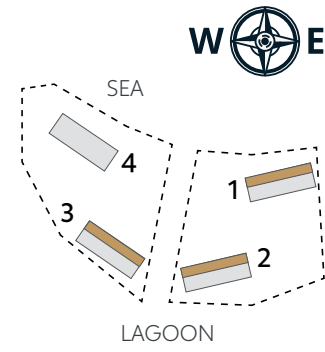
CAPE HAYAT

TYPICAL TOWER

2 BEDROOM APARTMENT

TYPE 1 (CORNER)	SQ.M	SQ.F
APARTMENT AREA	123.06	1324.61
BALCONY AREA	36.28	390.51
TOTAL AREA	159.34	1715.12

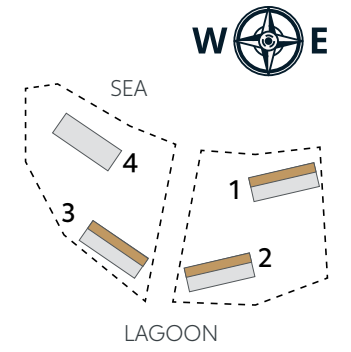
FLOOR	UNIT NO.
TOWER 2 & TOWER 3: L04-L19	02, 011
TOWER 1: L04-L08	02, 011



2 BEDROOM APARTMENT

TYPE 2 (MIDDLE)	SQ.M	SQ.F
APARTMENT AREA	105.96	1140.54
BALCONY AREA	28.50	306.77
TOTAL AREA	134.46	1447.31

FLOOR	UNIT NO.
TOWER 2 & TOWER 3: L04-L19	01, 012
TOWER 1: L04-L08	01, 012



Floor plan numbers, square footage, and floor plans are approximate. Final dimensions, square footage and floor plans may vary or may be mirrored. Balcony area varies depending on location of unit on the floor.



PENTHOUSE FLOOR PLANS

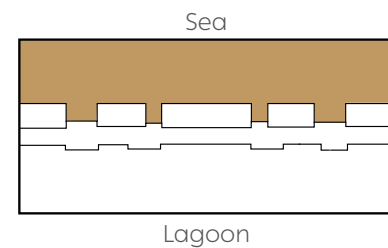
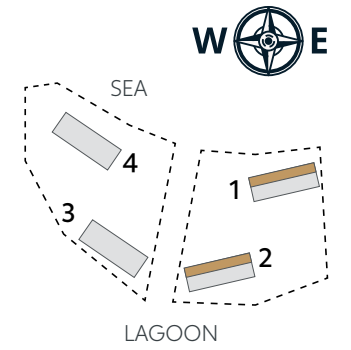
CAPE HAYAT

TYPICAL TOWER

PENTHOUSE

TYPE 1	SQ.M	SQ.F
APARTMENT AREA	473.58	5097.57
BALCONY AREA	164.26	1768.08
TOTAL AREA	637.84	6865.65

FLOOR	UNIT NO.
TOWER 1: L09	PH1
TOWER 2: L20	PH1



Floor plan numbers, square footage, and floor plans are approximate. Final dimensions, square footage and floor plans may vary or may be mirrored. Balcony area varies depending on location of unit on the floor.

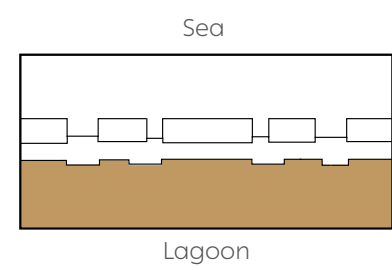
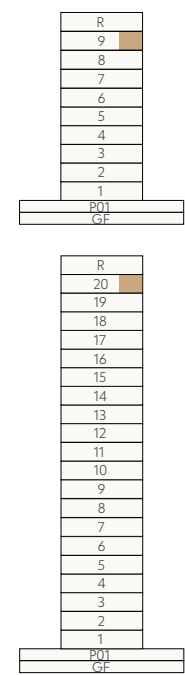
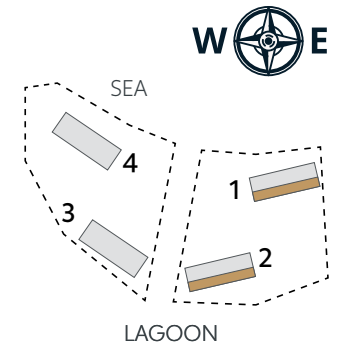
CAPE HAYAT

TYPICAL TOWER

PENTHOUSE

TYPE 2	SQ.M	SQ.F
APARTMENT AREA	474.57	5108.23
BALCONY AREA	159.00	1711.46
TOTAL AREA	633.57	6819.69

FLOOR	UNIT NO.
TOWER 1: L09	PH2
TOWER 2: L20	PH2



Floor plan numbers, square footage, and floor plans are approximate. Final dimensions, square footage and floor plans may vary or may be mirrored. Balcony area varies depending on location of unit on the floor.

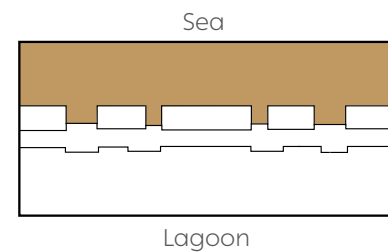
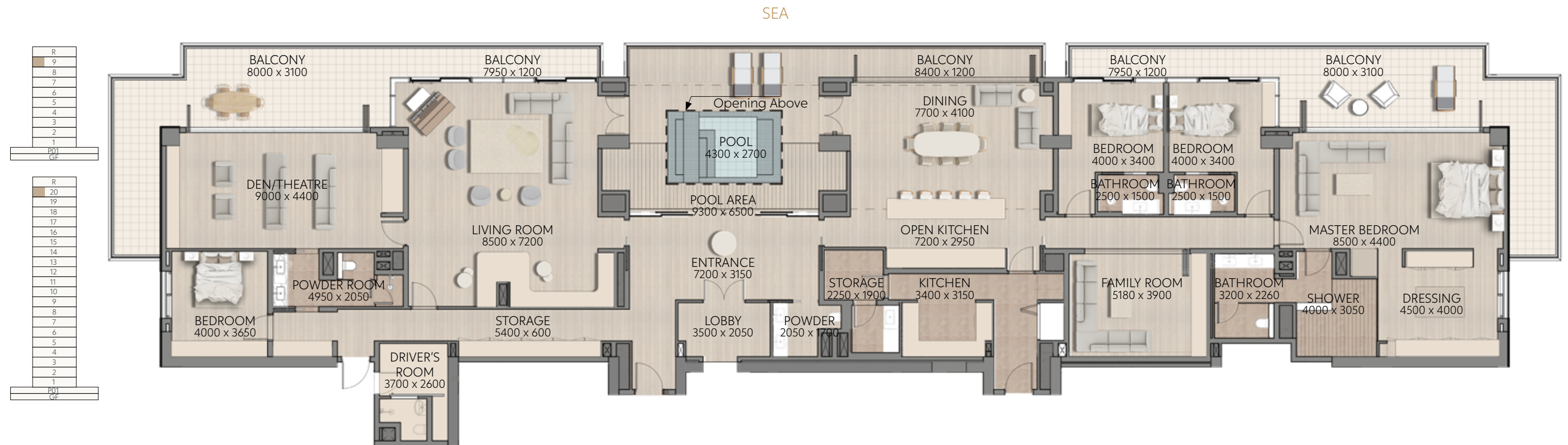
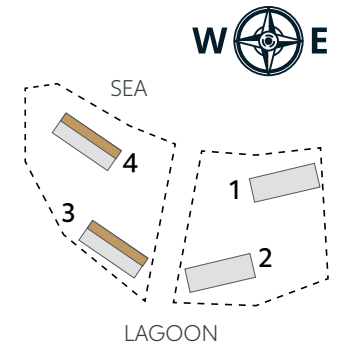
CAPE HAYAT

TYPICAL TOWER

PENTHOUSE

TYPE 1	SQ.M	SQ.F
APARTMENT AREA	473.92	5101.23
BALCONY AREA	166.11	1787.99
TOTAL AREA	640.03	6889.22

FLOOR	UNIT NO.
TOWER 3: L20	PH1
TOWER 4: L09	PH1



Floor plan numbers, square footage, and floor plans are approximate. Final dimensions, square footage and floor plans may vary or may be mirrored. Balcony area varies depending on location of unit on the floor.

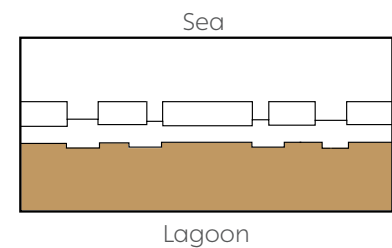
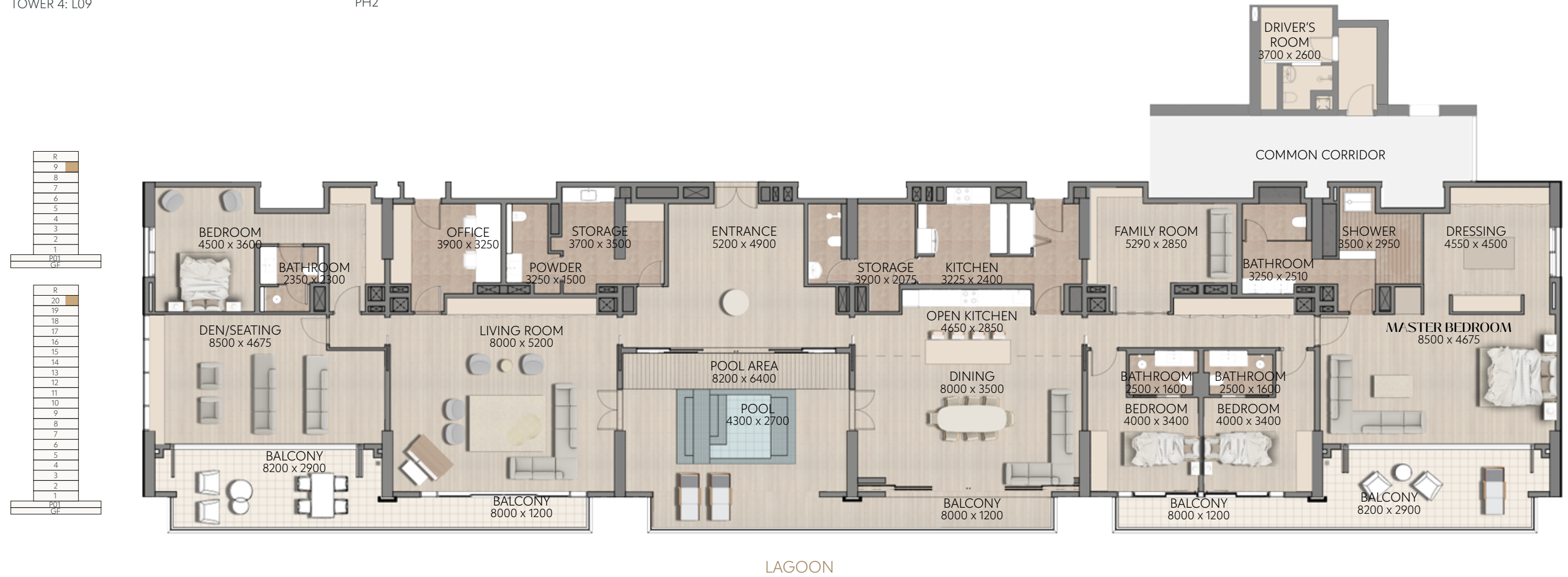
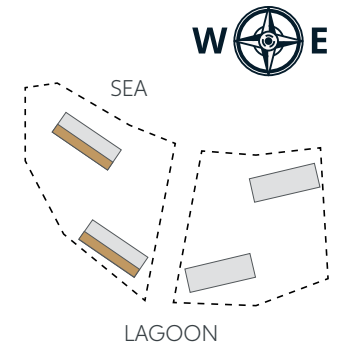
CAPE HAYAT

TYPICAL TOWER

PENTHOUSE

TYPE 2	SQ.M	SQ.F
APARTMENT AREA	462.29	4976.05
BALCONY AREA	133.93	1441.61
TOTAL AREA	596.22	6417.66

FLOOR	UNIT NO.
TOWER 3: L20	PH2
TOWER 4: L09	PH2



Floor plan numbers, square footage, and floor plans are approximate. Final dimensions, square footage and floor plans may vary or may be mirrored. Balcony area varies depending on location of unit on the floor.

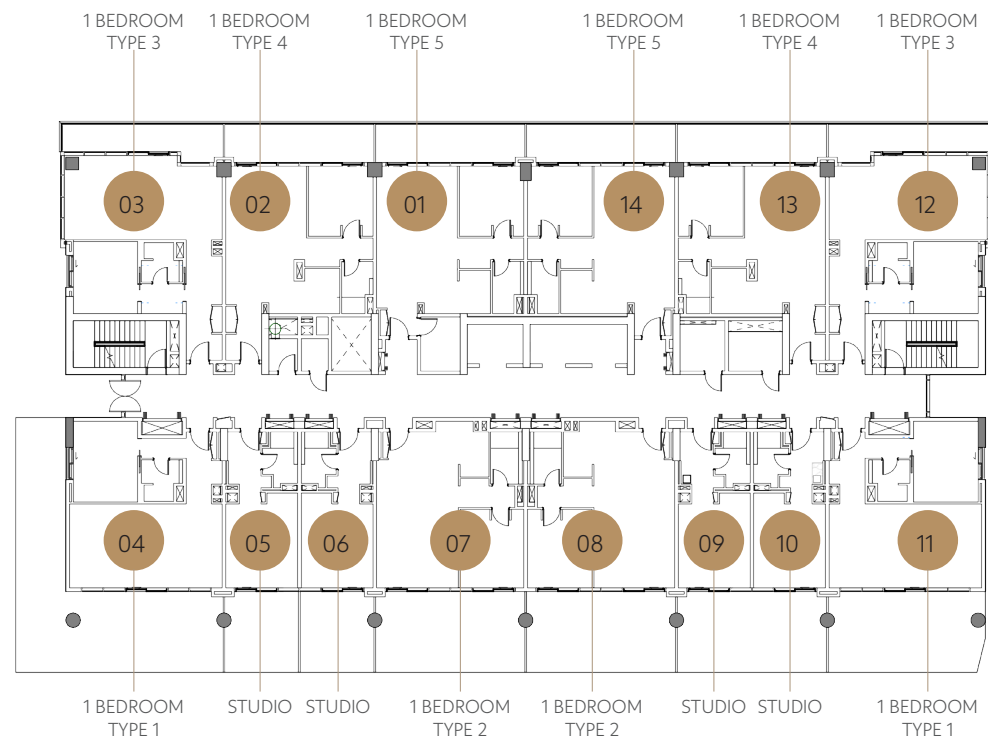


APARTMENT KEY PLANS

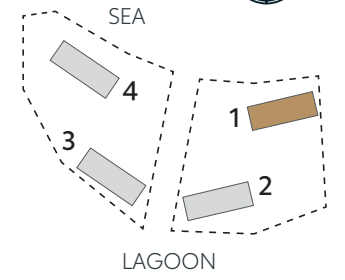
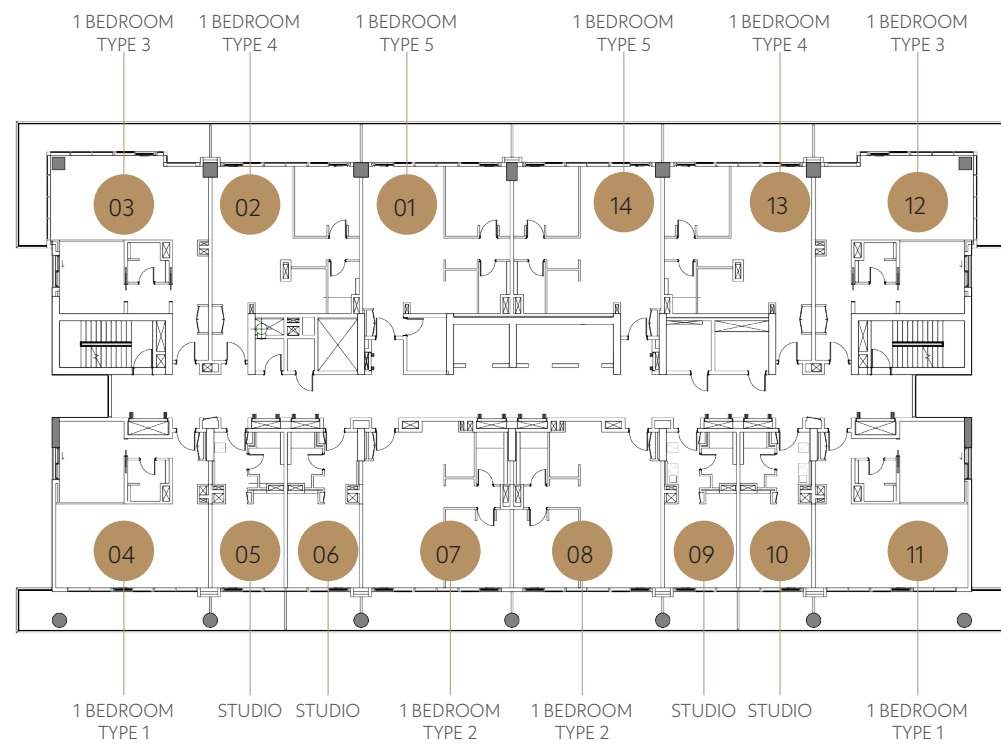
CAPE HAYAT

TOWER 1

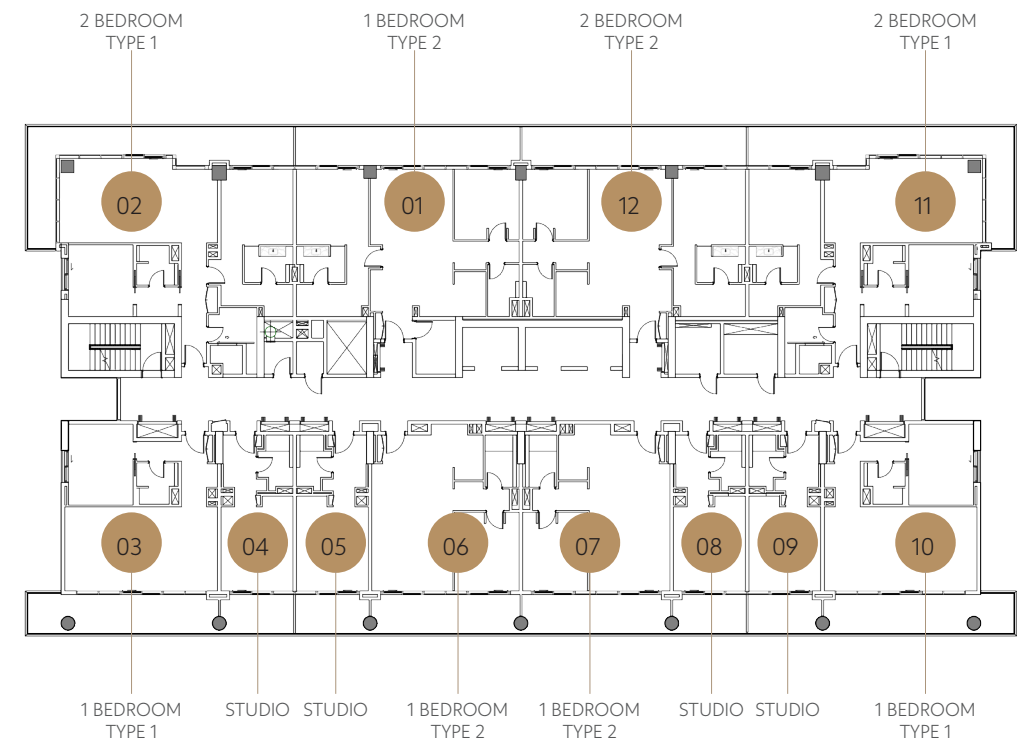
LEVEL 01



LEVELS 02-03



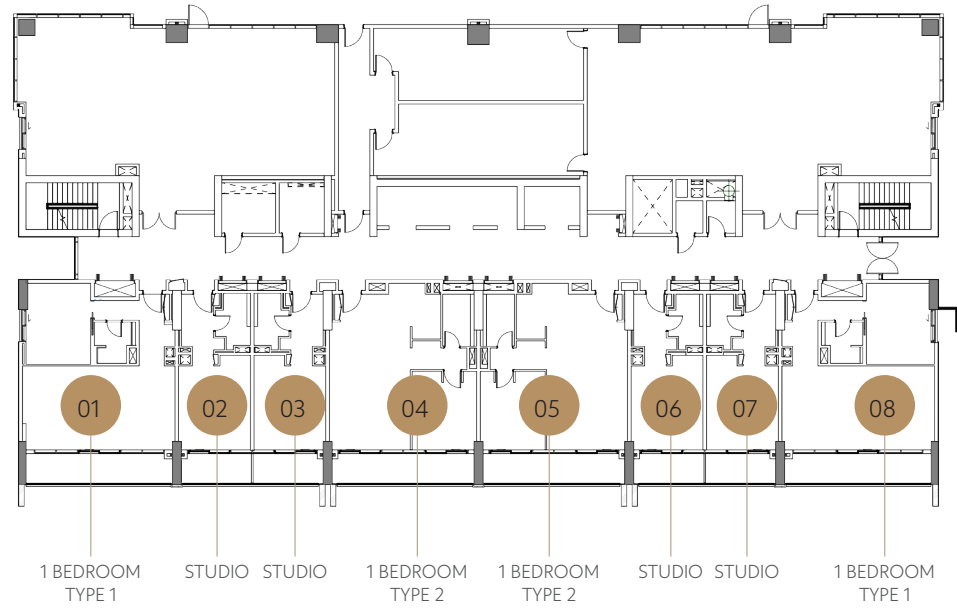
LEVELS 04-08



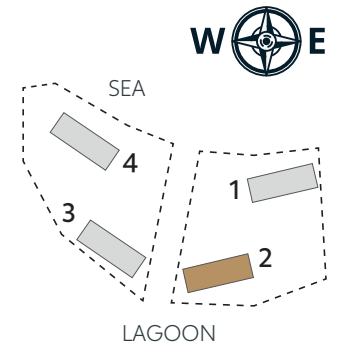
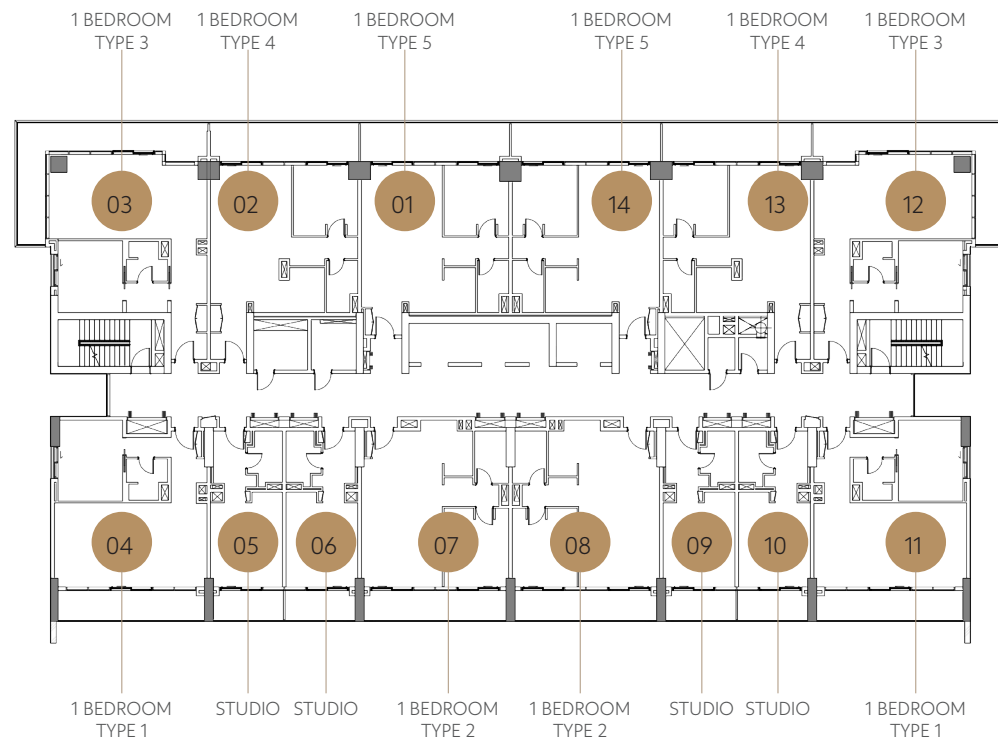
CAPE HAYAT

TOWER 2

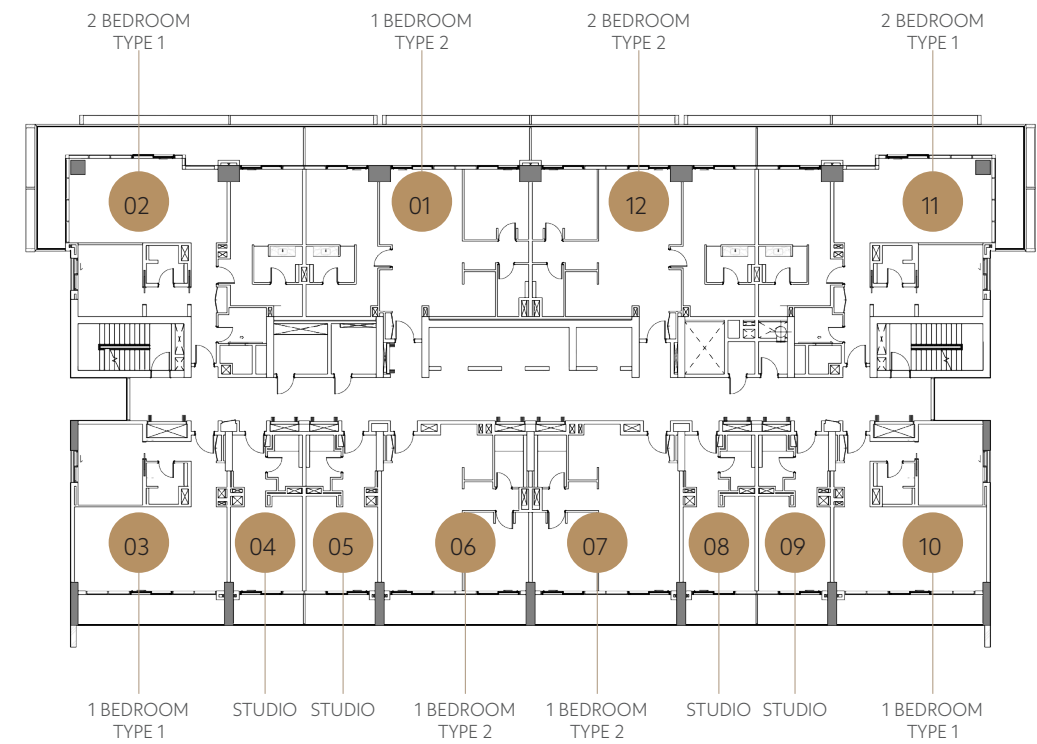
LEVEL 01



LEVELS 02-03



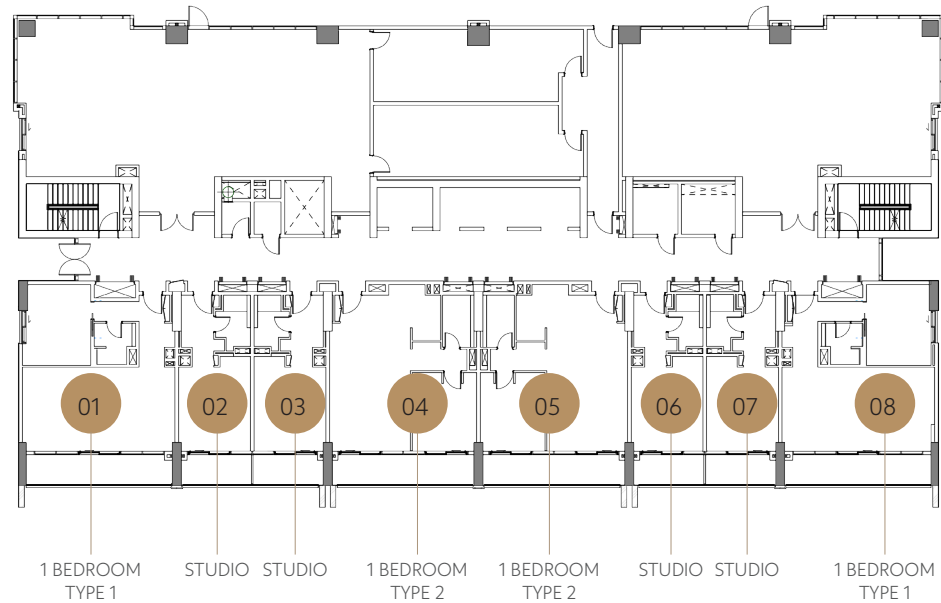
LEVELS 04-19



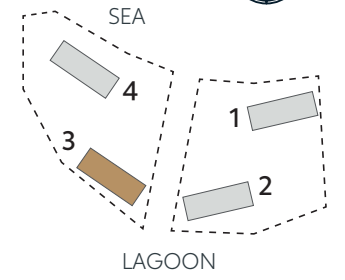
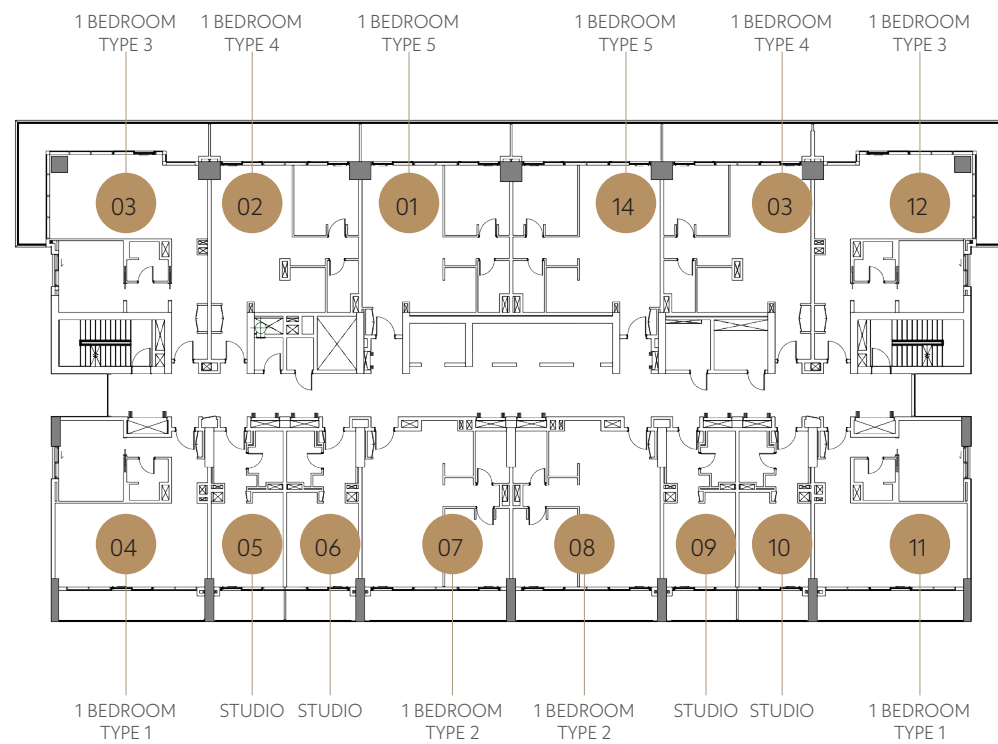
CAPE HAYAT

TOWER 3

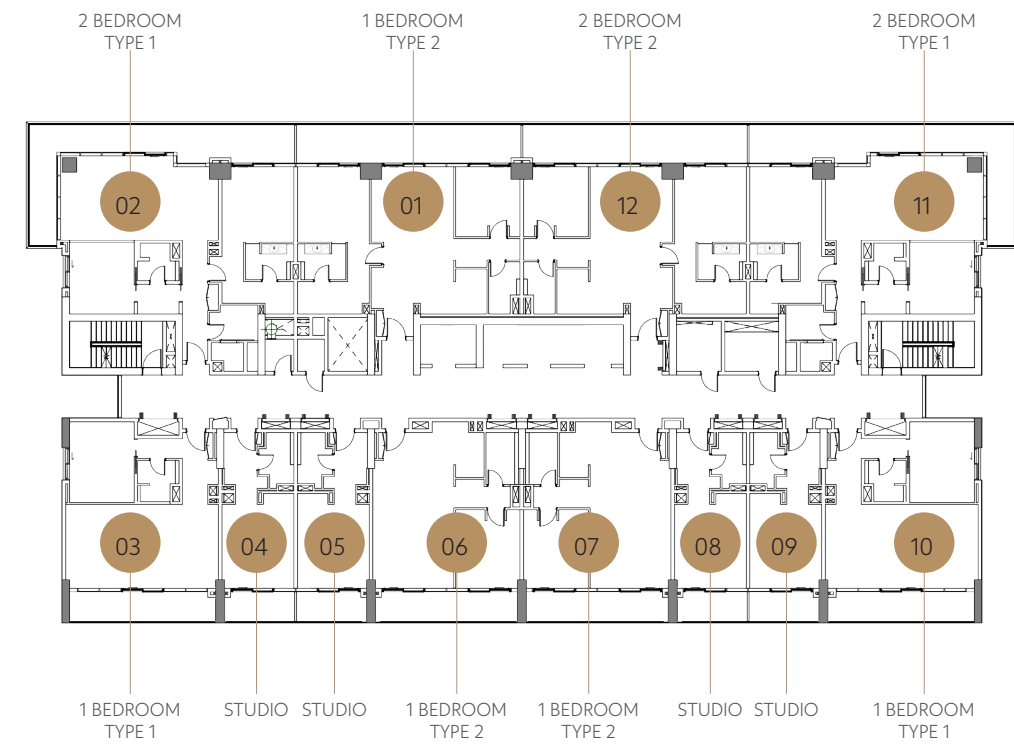
LEVEL 01



LEVELS 02-03

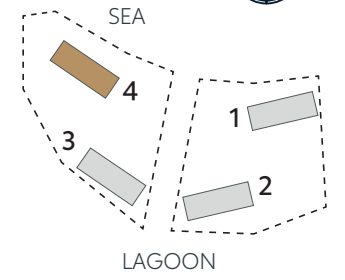


LEVELS 04-19

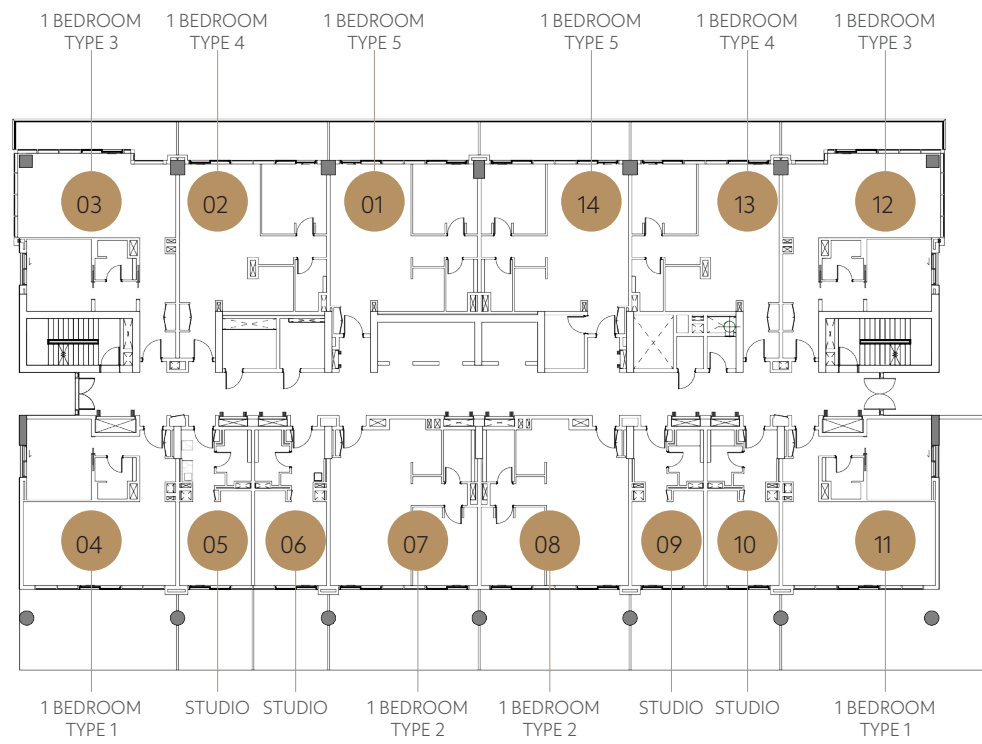


CAPE HAYAT

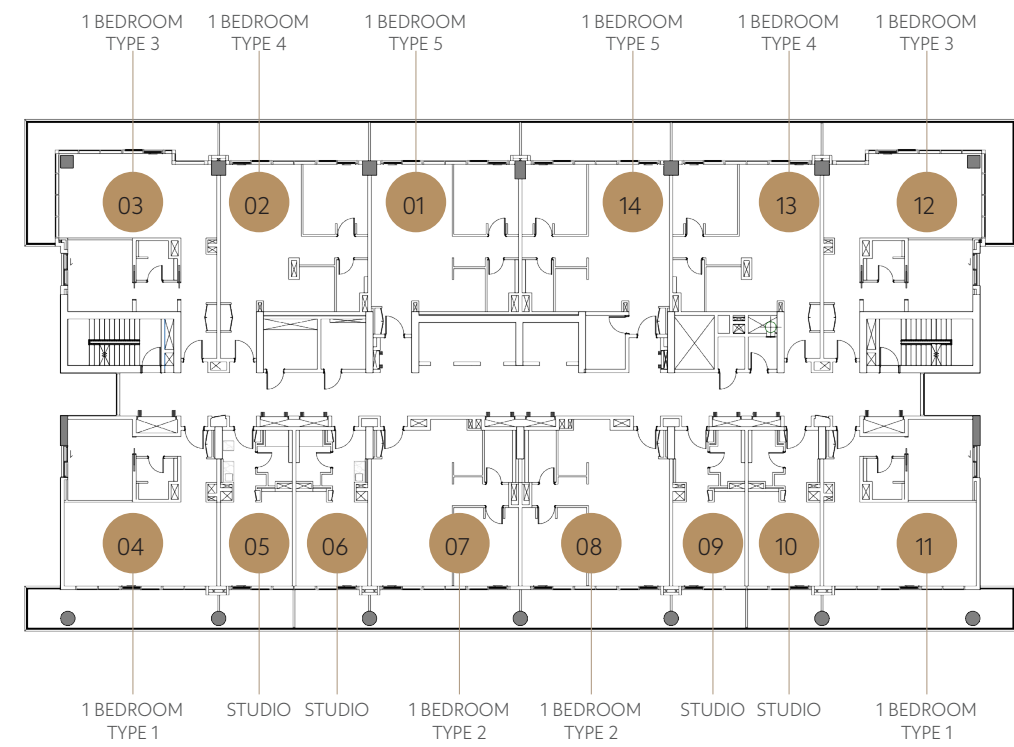
TOWER 4



LEVEL 01



LEVELS 02-08



CAPE HAYAT

A CURATED COLLECTION BY RAK PROPERTIES



FOR MORE INFORMATION PLEASE CALL 800 40 20

RAKPROPERTIES.AE

رأس الخيمة العقارية
RAK PROPERTIES